

Boujee

 4
  2
  2
  226m²



4 beds, 2 bathrooms (duh... like you'd settle for anything less). A theatre, obviously. Central island kitchen with a walk-in pantry AND scullery. So coastal grandma chic, we're slipping into our beige two-piece already. Master suite at the rear complete with a bath (when we said two baths, we meant it!). The only question will be: clawfoot or alcove? Whatever you choose, we know it'll be marble (or, y'know... at least marble *looking*).

200m²+ design

Because you need it all – comfortable living, room to grow, and all the amenities. Space? Tick. Style? Tick. Maintaining your sanity with a mix of private zones? Big tick.

Double garage

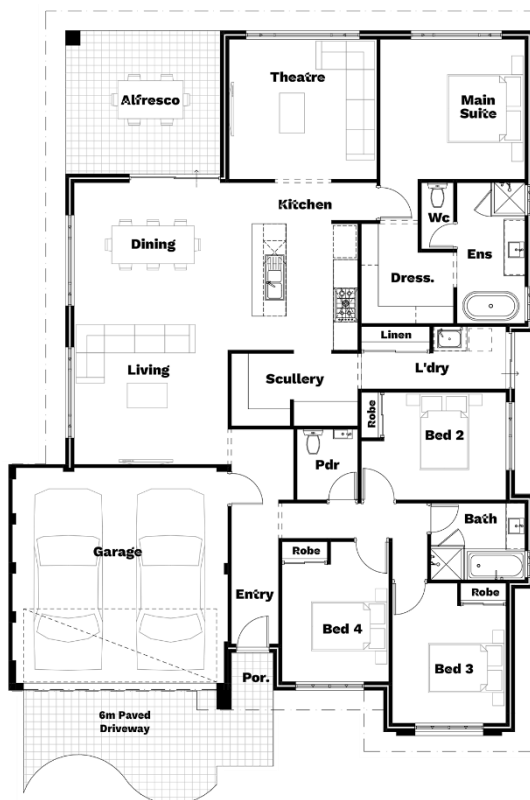
Tuck those prized rides in for the night and sleep sweetly yourself knowing they're both safe and sound. No need to play favourites.

Island kitchen


Aspiring chef's paradise or entertainer's dream, meet the heart of your new home. From quiet heart-to-hearts to raucous dinner parties, your new island bench is up to the task.

Paved alfresco

Be the host with the most with this beautiful paved alfresco, perfect for balmy summer nights. Not that you'll need company... just BYO book and a tipples of choice.



Your choice of 6 designer elevations OR Your choice of 4 not-so-standard specifications
Unlimited design changes | A remarkable building experience

IT'S TIME...MAKE YOUR MARK 

 LAVIDAHOMESWA  LA_VIDA_HOMES_WA

*Terms and conditions apply. Visit lavidahomes.com.au/terms-and-conditions

La Vida Australia Pty Ltd
ABN 36 645 789 993
 BC 103744

Ground floor, 142 Hasler Road
 Osborne Park WA 6017
M 08 6185 0944
E info@lavidahomes.com.au
W lavidahomes.com.au