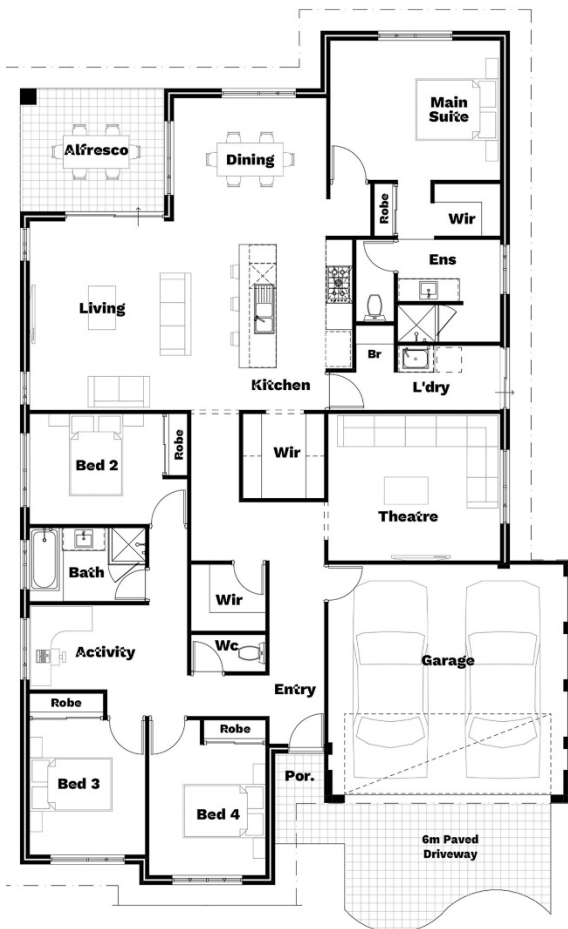


Hustler

 4
  2
  2
  15m²
 232m²



This one's for the hustlers—yes you there, running towards the big bright lights. It stars all the usual suspects and a host of dazzling extras. A master with built-in AND walk-in. Theatre for you AND activity room for the kids. Walk-in pantry AND walk-in linen cupboard. But the best part, in our humble opinion? That open plan living situation. So go get it, hustlers. We're not about to be the ones to tell you to slow down.



200m²+ design

Because you need it all – comfortable living, room to grow, and all the amenities. Space? Tick. Style? Tick. Maintaining your sanity with a mix of private zones? Big tick.

Island kitchen

Aspiring chef's paradise or entertainer's dream, meet the heart of your new home. From quiet heart-to-hearts to raucous dinner parties, your new island bench is up to the task.

Kids' playroom

Because fun deserves a room of its own. Colour, creativity, and giggles are right at home here. What will you find inside today... sophisticated tea party or mutinous pirate crew?



Master suite

Because you deserve a bedroom fit for nobility. Complete with walk-in robe and glamorous ensuite to really make you feel like the King or Queen of your castle.

Your choice of 3 designer elevations | Your choice of 5 not-so-standard specifications
 Unlimited design changes | A remarkable building experience



It's time. Make your mark.

 LA_VIDA_HOMES
  LAVIDAHOMESWA

La Vida Australia Pty Ltd
 ABN 36 645 789 993

BC 103744

Unit 3 | Level 1 -76 Hasler Road
 Osborne Park WA 6017

M 0408 360 135
 E info@lavidahomes.com.au
 W lavidahomes.com.au