

Boujee

 4
  2
  2
  15m²
 226m²



Okay our little luxe-lovin' mark-makers, listen up: this one we did just for you. 4 beds, 2 bathrooms (duh... like you'd settle for anything less). A theatre, obviously. Central island kitchen with a walk-in pantry AND scullery. So coastal grandma chic, we're slipping into our beige two-piece already. Master suite at the rear complete with a bath (when we said two baths, we meant it!). The only question will be: clawfoot or alcove? Whatever you choose, we know it'll be marble (or, y'know... at least marble looking).

200m2+ design

Because you need it all – comfortable living, room to grow, and all the amenities. Space? Tick. Style? Tick. Maintaining your sanity with a mix of private zones? Big tick.

Island kitchen

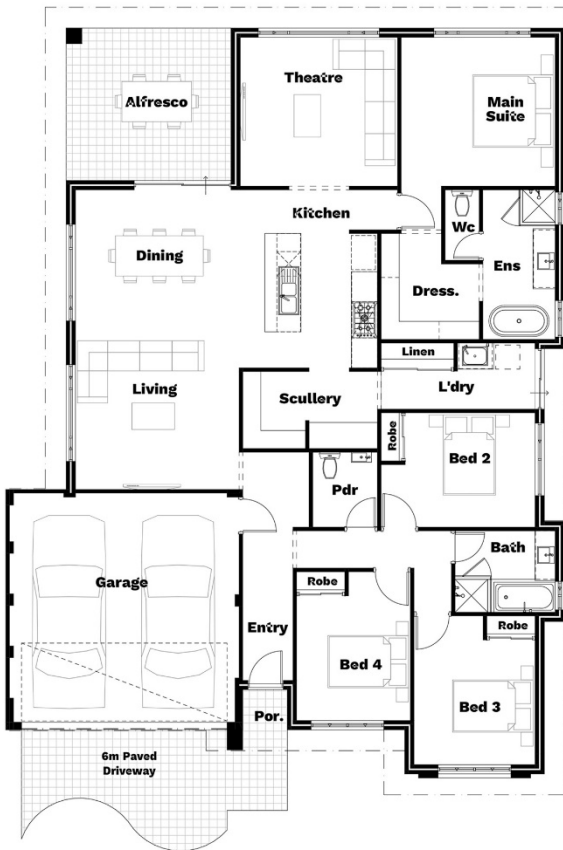
Aspiring chef's paradise or entertainer's dream, meet the heart of your new home. From quiet heart-to-hearts to raucous dinner parties, your new island bench is up to the task.

Paved alfresco

Be the host with the most with this beautiful paved alfresco, perfect for balmy summer nights. Not that you'll need company... just BYO book and a tiple of choice.

Double garage

Tuck those prized rides in for the night and sleep sweetly yourself knowing they're both safe and sound. No need to play favourites.



Your choice of 3 designer elevations | Your choice of 5 not-so-standard specifications
 Unlimited design changes | A remarkable building experience