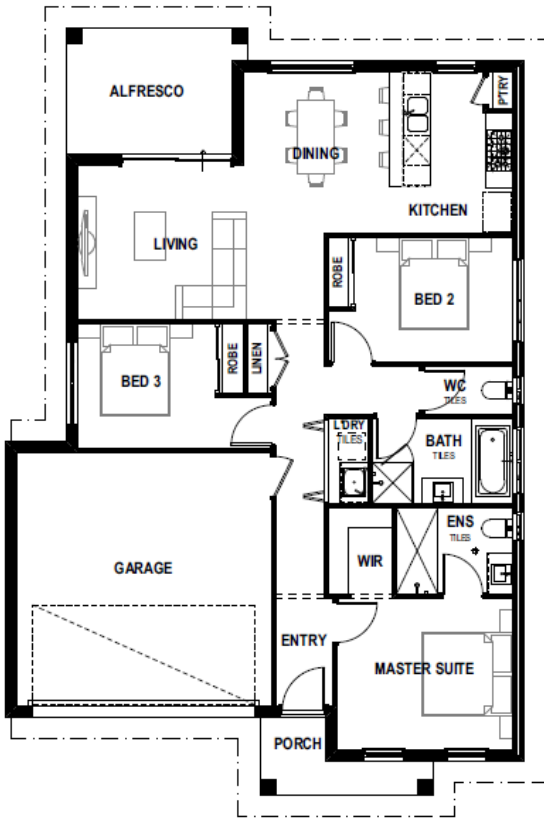


Far Out

🛏️ 3 🚿 2 🚗 1 🏠 10m² 📏 152m²



This three-bed, two-bath ‘starter’ home offers a spacious 170m² layout. Features include a large master, L-shaped island kitchen, open plan living and dining, and a second living space. It also boasts minor bedrooms with shared ensuite, and a separate WC accessible from the main hall. A delightful treat for any homeowner.



Built In linen cupboard

Because more is more when it comes to linen. No more racing to get your single set of sheets dry, you can have a set for every day of the week. Perhaps in different shades of French flax (hint).

Double garage

Tuck those prized rides in for the night and sleep sweetly yourself knowing they’re both safe and sound. No need to play favourites.

Noble master suite

A bedroom fit for nobility. Complete with walk-in robe and glamorous ensuite to really make you feel like the King or Queen of your castle.

Your choice of 6 designer elevations | Your choice of 2 not-so-standard specifications
Unlimited design changes | A remarkable building experience



It's time. Make your mark.

📍 LAVIDAHOMESAUS 📧 LA_VIDA_HOMES

La Vida Homes SA Pty Ltd
ABN 73 664 557 395

BLD 324482

Suite 16 | 15 Fullarton Rd
Kent Town SA 5067

M 0448 383 374
E hello@lavidahomes.com.au
W lavidahomes.com.au

*Terms and conditions apply. Visit lavidahomes.com.au/terms-and-conditions