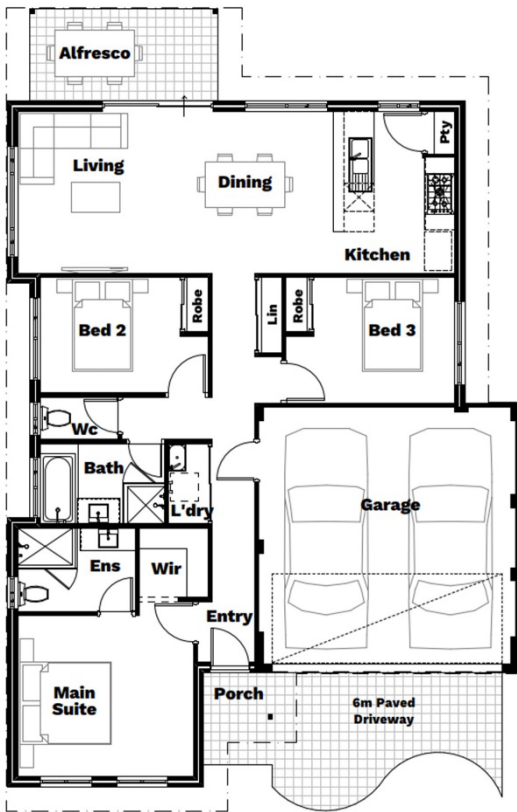
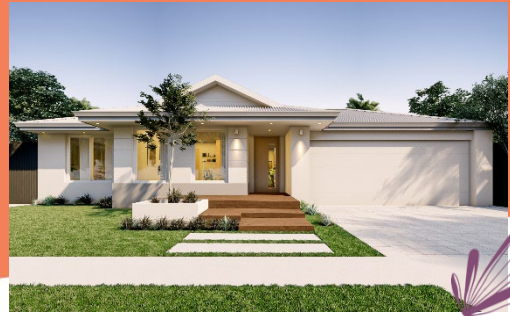


# Far Out

🛏️ 3 🚿 2 🚗 2 🏠 12.5m<sup>2</sup> 📄 152m<sup>2</sup>



With 3-beds, 2-baths, and lots of built ins (pantry, linen closet, robes) this clever design ensures the mess of daily life is kept out of sight and mind. So, you can spend your days gazing out of the open planned living area onto the dreamy alfresco. Far out...talk about a designer view!

### Squat design

It's hip to be a square. For those who want plenty of room to move, you'll really make the most of your block with this clever design.

### Double garage

Tuck those prized rides in for the night and sleep sweetly yourself knowing they're both safe and sound. No need to play favourites.

### Master suite

Walk-in robes for two? Check. Luxurious private ensuite? Check. Space to spread out in your new King bed? Check. Your new bedroom has truly mastered it all

Your choice of 3 designer elevations | Your choice of 5 not-so-standard specifications  
Unlimited design changes | A remarkable building experience



*It's time. Make your mark.*

📍 LAVIDAHOMESAUS 📷 LA\_VIDA\_HOMES

La Vida Homes SA Pty Ltd  
ABN 73 664 557 395

BLD 324482

Suite 16 | 15 Fullarton Rd  
Kent Town SA 5067

M 0448 383 374  
E hello@lavidahomes.com.au  
W lavidahomes.com.au

\*Terms and conditions apply. Visit [lavidahomes.com.au/terms-and-conditions](http://lavidahomes.com.au/terms-and-conditions)