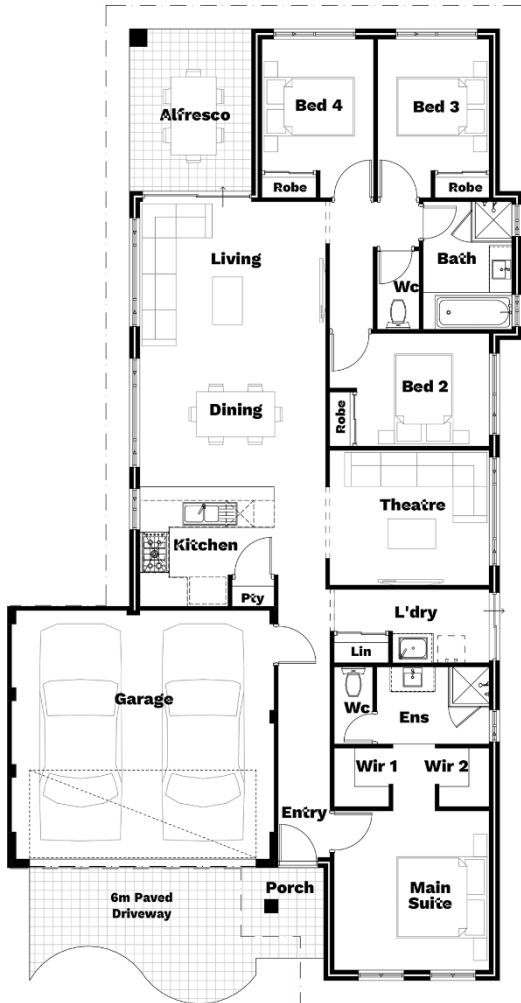


Believe

4 2 2 180m²



Do you believe in love at first sight? Because if you didn't believe 'the one' was out there for you (at a price you can actually afford), this floor plan will have you praising the design deities. Our design team's ode to the biggest heart-eyed emoji, you'll find a master suite with the lot, separate children's wing, theatre (or fifth bedroom?), modern side living, and more. ?



Home theatre

Movie buffs, you've got your very own red carpet-worthy theatre. Perfect for screenings of the latest big-budget blockbuster, mind-bending drama or sweet rom-com. Frocks optional, sweats encouraged.

Laundry Levelled Up

It's inevitable, so let's make it fun. Big enough and smart enough to make short work of the heaviest of loads, it's a laundry lover's dream (yes, they exist!)

Open plan living

Because it's all about the 'flow'. Catch up on the latest gossip while stirring the pot (the one on your stove) without losing sight of the two or four-legged rugrats outside.

Walk-in robes for two

Fighting over wardrobe space becomes a thing of the past. With all that extra space you might struggle to find that cosy jumper you love to steal so much though...

Your choice of 6 designer elevations OR Your choice of 4 not-so-standard specifications
 Unlimited design changes | A remarkable building experience

IT'S TIME...MAKE YOUR MARK

LAVIDAHOMESWA LA_VIDA_HOMES_WA

La Vida Australia Pty Ltd
ABN 36 645 789 993
 BC 103744

Ground floor, 142 Hasler Road
 Osborne Park WA 6017
M 08 6185 0944
E info@lavidahomes.com.au
W lavidahomes.com.au